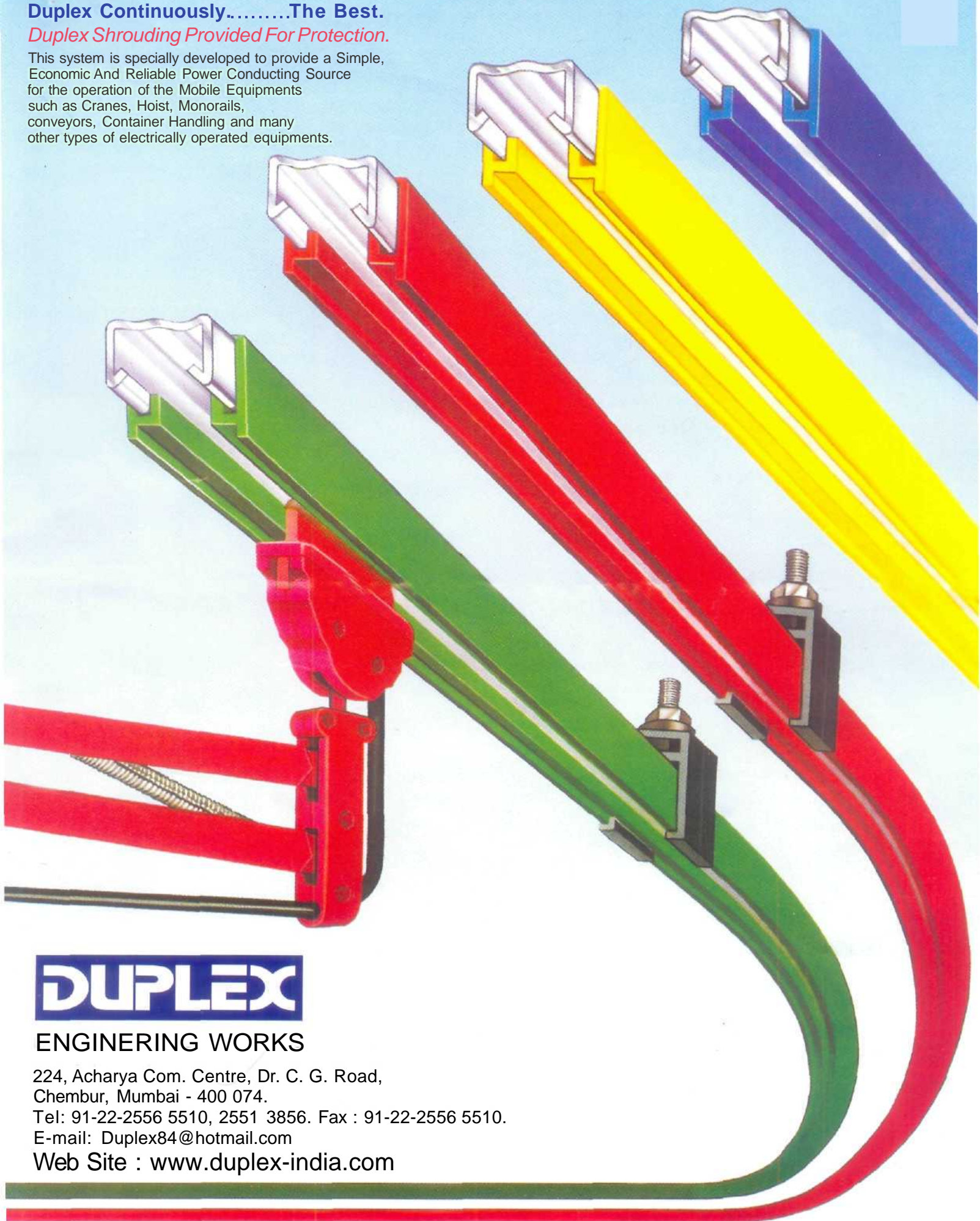


**Duplex Dependable shrouded system for mobile electrification  
Duplex Continuously.....The Best.**

***Duplex Shrouding Provided For Protection.***

This system is specially developed to provide a Simple, Economic And Reliable Power Conducting Source for the operation of the Mobile Equipments such as Cranes, Hoist, Monorails, conveyors, Container Handling and many other types of electrically operated equipments.



**DUPLEX**

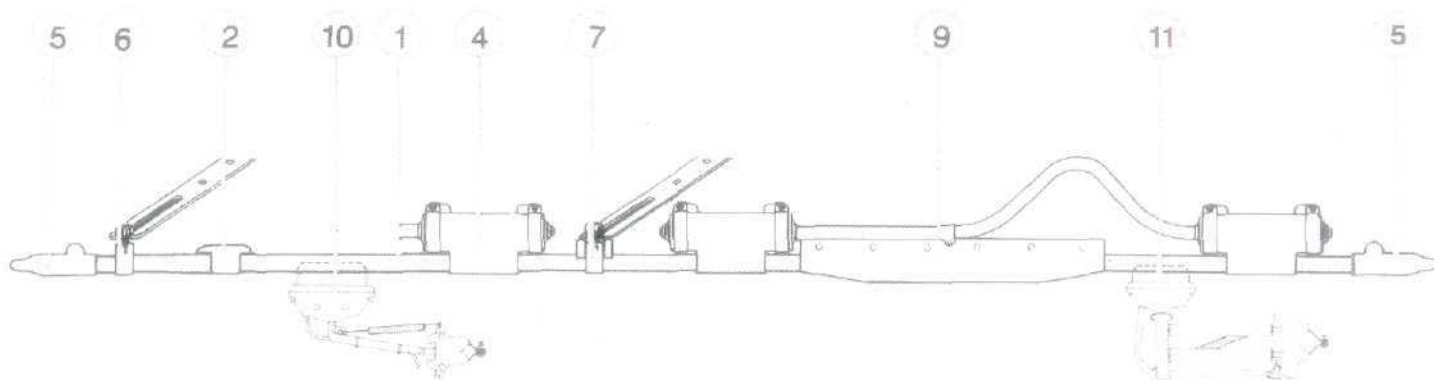
**ENGINEERING WORKS**

224, Acharya Com. Centre, Dr. C. G. Road,  
Chembur, Mumbai - 400 074.

Tel: 91-22-2556 5510, 2551 3856. Fax : 91-22-2556 5510.

E-mail: Duplex84@hotmail.com

Web Site : [www.duplex-india.com](http://www.duplex-india.com)



*Collector and conductor support brackets are available*

### 1. Bar, Cover and pin assembly - 4m long



125/A Rolled G.I.  
Conductor assembly  
315A-RolledCu-  
Conductor assembly.  
40A Rolled S.S.  
Conductor assembly.  
Max. Working Temp. 80°C

### 2. Splice cover



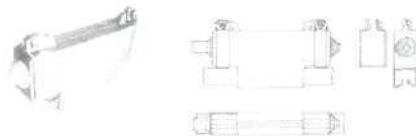
Moulded plastic one  
piece clip-on cover

### 3. Crimping tool



For copper conductors  
only

### 4. Centre power feed kit



Kit comprising  
power feed clamp,  
fixing nuts and bolts  
and insulating cover.

### 5. End cap



Kit comprising stop  
bolt and PVC push-on  
insulating cover.

### 6. Hanger clamp



Plastic moulded  
snap-on type support.

### 7. Anchor clamp



Plastic moulded  
snap-on type with self  
anchoring features. For  
use at anchor points.

### 8. Jointing tool



Special assembly tool  
required to connect  
bars on site.

### 9. Expansion assembly



Complete factory  
assembled unit of 2  
metres overall length.

### 10. 125A type collector



COLLECTOR MOVEMENT  
VERTICAL ± 46mm  
LATERAL ± 35mm

For use with hoist  
applications. Straight  
runs only.

### 11. 125 A D type collector



COLLECTOR MOVEMENT  
VERTICAL ± 50mm  
LATERAL ± 50mm

For use on straight/  
curved systems

### Technical data

Conductor spacing: Indoor 30mm min./Outdoor 40mm min.

For working temperatures exceeding 80°C consult our technical department

NOTE : Tandem collectors are required when expansion sections are fitted.