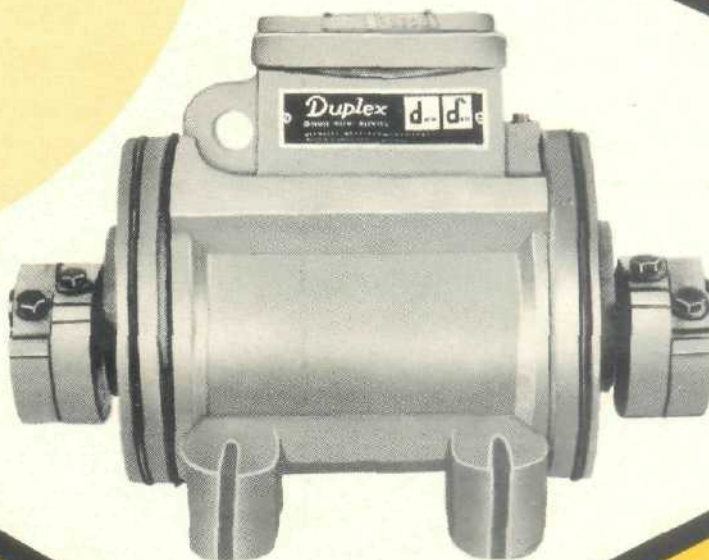
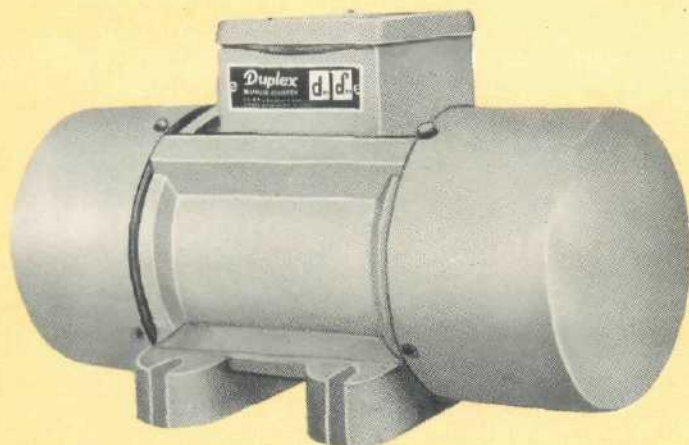


UNBALANCE VIBRATOR MOTORS

Duplex



Duplex make Vibrator Motors are robust, reliable, highly loadable, quiet-running and require no maintenance. Their essential characteristics are:

- " generously dimensioned cylindrical roller bearing, self lubricating maintenance-free long life expectancy;
- " embedded in high-quality impregnating resin vibration-proof winding, insensitivity to damp and dust;
- " dust-tight and water-tight through a sealing covering with special circular rubber washer;
- 1 robust terminal board, cast in synthetic resin;
- ' reliable starting by means of a high-powered starting torque;
- " quality-tested components, each motor tested under load;
- " permanent and well legible setting marking of the unbalance weights;
- " one or two solid lifting lugs;

- * vibration-proof joining through the considerable tensility of the mounting screws;
- * absolutely secure centrifugal mounting only the inner centrifugal weights are steplessly adjustable, the outer ones cannot even be dislodged through an unintentional loosening, due to the provision of a retaining ring;
- * highly stressed casting of ductile cast iron;
- * universal mounting facilities through an optimum choice of interspacings in the base mounting.

Duplex

Technical Data

Centrifugal force range	from 1850 to 70000 N
Operating torque range suitable for vibratory units	from 3.7 to 1250 kg. cm.
Within working weight range	from 35 to 3010 kgs
Power connection	from 3-phase current with 50 Hz, 415 V A.C. from 0.23 to 337 kw up to 60°C
Rated consumption	IP 65 as in DIN 40 050, p. 2, or IP 55 as in DINIEC 34, part 5
Ambient temperature	F class
Degree of protection	
Insulation class	

UNBALANCE VIBRATOR MOTORS

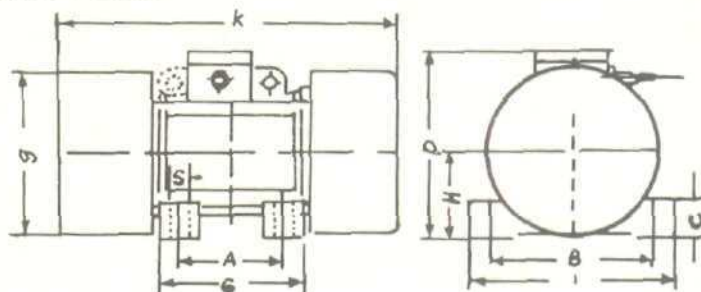


TABLE 2 UNBALANCE MOTOR TECHNICAL DATA

TYPE	max. ope- rating torque	max. centri- fugal force ⁻¹⁾	suitable for vibratory equipment within the weight range		weight (Approx)	rated output (consu- mption	rated current at 50 Hz 415 V	DIMENSIONS IN mm									
	Kg cm	N	of kg	to kg	kg	kw	A	a	b	c	e	f	g	h	k	p	
2 POLE MOTORS WITH APPROX. 2800 r.p.m.																	
DUP 1 Y	1.85	910	15	50	15	0.14	*	115	135	25	142	162	445	80	307	195	11
DUP 2 Y	3.7	1830	35	110	16	0.23	0.6	115	135	25	142	162	445	80	307	195	11
DUP 3 Y	6.0	2850	65	185	17	0.23	0.87	115	135	25	135	162	445	80	307	195	11
DUP 6 Y	12.5	6160	115	360	27	0.74	1.35	120	180	40	165	210	472	95	374	230	14
DUP 10 Y	21.0	10230	195	615	47	1.00	1.41	125	230	58	175	260	494	115	444	266	18
DUP 16 Y	32.5	16060	310	960	58	1.40	*	125	230	58	175	260	218	115	494	266	18
DUP 20 Y	41	20100	375	1200	85	2.00	*	165	260	60	230	330	258	135	540	300	27
DUP 30 Y	61	30000	530	1750	140	2.90	*	280	290	60	345	355	310	160	638	338	27
DUP 50 Y	100	49460	890	2890	255	6.10	*	350	400	70	420	470	348	185	810	400	33
4 POLE MOTORS WITH APPROX. 1430 r.p.m.																	
DUP 4 X	34.5	4270	55	170	30	0.37	0.75	120	180	40	165	210	472	95	374	230	14
DUP 6 X	51.5	6380	100	275	35	0.51	1.02	120	180	40	165	210	472	95	428	230	14
DUP 10 X	77.5	9550	160	415	55	0.83	1.48	125	230	58	175	260	494	115	444	266	18
DUP 16 X	130	16040	295	730	70	1.10	1.85	125	230	58	175	260	218	115	494	266	18
DUP 25 X	209	25780	495	1190	100	1.50	2.2	165	260	60	230	330	258	135	540	300	27
DUP 37 X	300	37090	700	1700	153	2.46	*	280	290	60	345	355	310	160	638	338	27
DUP 63 X	547	67600	1350	3170	283	5.13	*	350	400	70	420	470	348	185	740	400	30
DUP 104 X	843	104120	1650	4500	580	7.50	*	500	500	90	590	590	410	250	800	500	39
6 POLE MOTORS WITH APPROX. 950 r.p.m.																	
DUP 10 W	182	10000	160	375	73	1.00	*	125	230	58	175	260	472	115	494	266	18
DUP 11 W	209	11460	160	405	95	1.00	1.70	165	260	60	230	330	258	135	540	300	27
DUP 18 W	314	17220	295	665	110	1.24	2.16	165	260	60	230	330	258	135	600	300	27
DUP 23 W	418	22930	435	930	132	1.67	2.90	165	260	60	230	330	258	135	672	300	27
DUP 35 W	631	34620	700	1440	180	2.30	5.57	280	290	60	345	355	310	160	730	338	27
DUP 53 W	959	52610	990	2130	305	2.74	6.20	350	400	70	420	470	348	185	810	400	33
DUP 71 W	1278	70160	1430	2950	350	3.87	8.60	350	400	70	420	470	348	185	890	400	33
DUP 92 W	1687	92137	1930	3900	600	8.56	*	500	500	90	590	590	410	250	910	500	39
DUP 122 W	2250	122850	2790	5470	640	8.56	*	500	500	90	590	590	410	250	990	500	39

MAILING & OFFICE:
224, ACHARYA COMM. CENTRE,
CHEMBUR, BOMBAY : 400 074.
PHONE: 551 38 56, 556 55 10, FAX: 022-5565510
WORKS: C-420, T.T.C. INDUSTRIAL AREA,
M.I.D.C., TURBHE, NEW BOMBAY : 400 703.

DUPLEX ENGINEERING WORKS