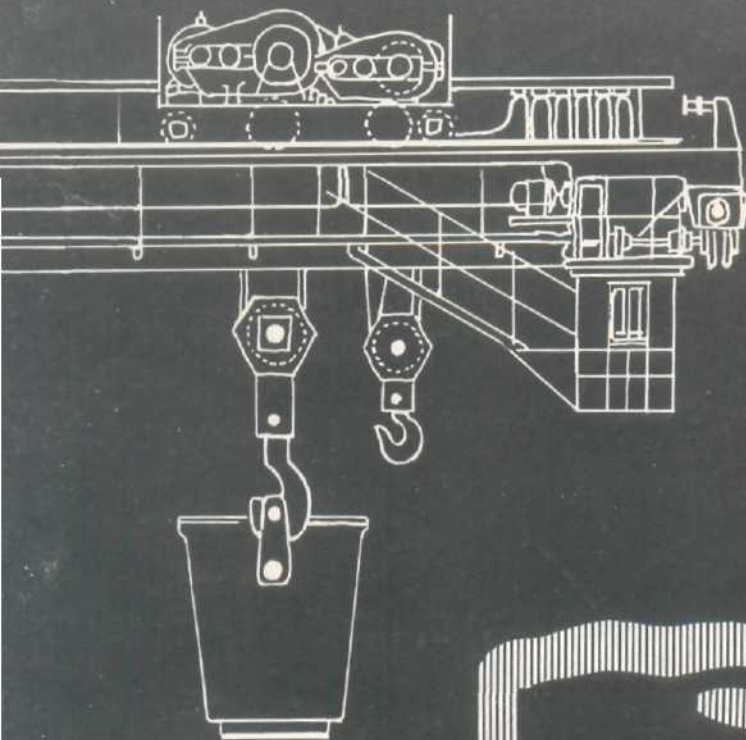
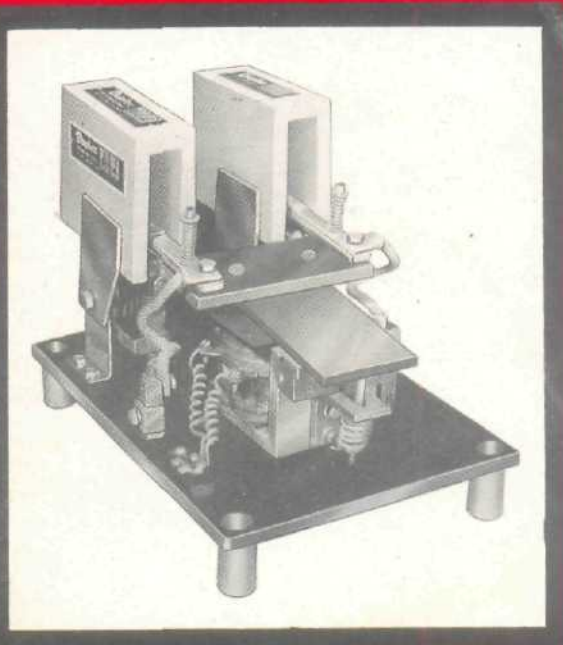


Duplex - D.C. CONTACTORS



Duplex

Duplex

D.C. CONTACTORS

Ratings from 15 Amps to 1500 Amps

AC or DC Switching.

Clapper type soundless operation

Space saving

Easy maintenance

Fast mounting and connection

Duplex Contactors are designed for heavy duty frequent operations demanded by Mill and Crane duty suitable for voltage upto 600 Volts DC.

These contactors are designed for mechanical duty Class 10 as per IS: 2959: 1975.

Each Contactor is complete and mounted on its own base which can be easily mounted on the panel by not more than four bolts. Removal of contactor leaves internal connections undisturbed.

DESCRIPTION:

Duplex Contactors have rating ranging from 15 Amps to 1500 Amps are available in four basic types, viz., Single Pole, Double Pole, Triple Pole and Four pole with main contacts open or closed or a mixture of both, as per clients specifications.

Operating coil is *B' class insulated, D.C. energised working on 220 Volts D.C. Other operating voltages can be offered on request. Contactors can also be offered with a rectifier bridge to take direct supply from an AC source.

The Contactor will operate satisfactorily on 80% of normal voltage when the coil is hot and will hold in on 20% of normal voltage. The coil will withstand 110% of the normal voltage continuously.

Arc chutes are made from special heat resistant material such as syndyano and are hinged so that they can be lifted for inspection or replacement of contacts. In the lifted position the arc chutes are self supporting.

Two or more Single Pole contactors, mounted on a single base can be mechanically interlocked in a simple but efficient manner to operate as multipole contactor. Shaft mounted multi-pole contactors can also be supplied.

A wide range of electrical interlocks by means of Auxiliary Contacts is available on request at extra price.

CONSTRUCTION:

Duplex contactor have Front accessible components offer weight and space saving panel and permit easy front of panel inspection and replacement of parts damaged or worn by the extreme current surges encountered in mill duty applications.

Blow out and Arc chute structures are designed to quickly absorb and dissipate the heat caused by arcing. Long contact life is assured because the hot arc is transferred from the contact tips. At the instant the contacts start to separate, the arc is automatically transferred from the contacts to the arcing plate and the circular guard over the blowout out. The arc, as it travels along the arcing plate and the circular guard, is stretched out in a line centered between the arc chutes. Hence the contacts remain cool and cool contacts last longer.

CONTACTS:

Main contacts are made from high conductivity copper and are of generous dimensions.

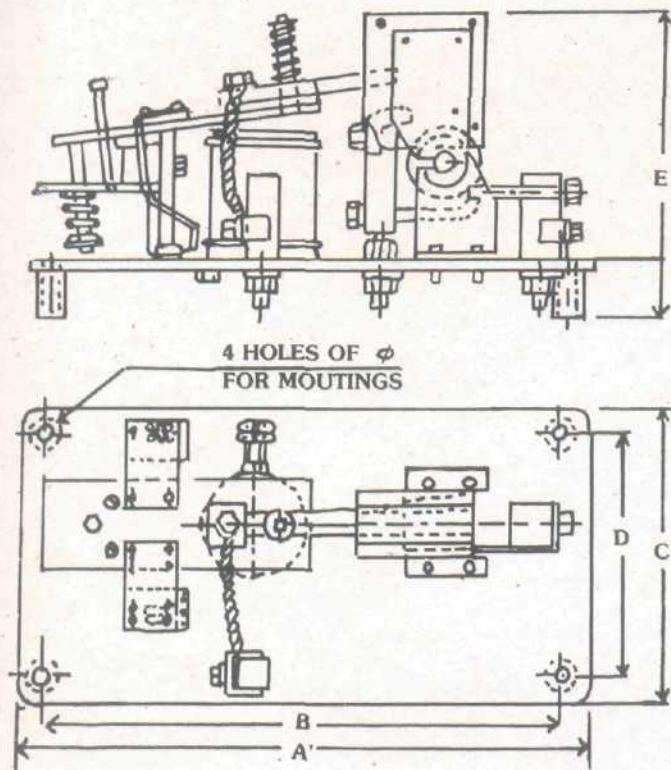
Contactors are offered in open execution as shown in the photograph on the front page

INFORMATION REQUIRED FOR QUOTATION:

- * Current Range
- " Number of poles
- * Whether required to make and break AC or DC
- * No. of Auxiliary contacts required
- * Operating Coil voltage
- * Type of main contacts required — normally open or closed

'DUPLEX' HELPS INDUSTRIES.

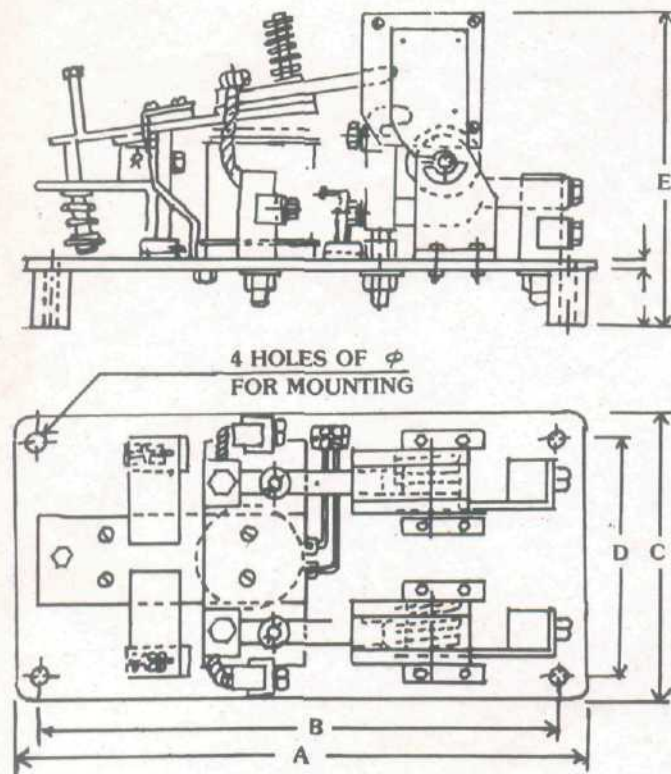
SINGLE POLE D.C. CONTACTOR



DIMENSIONAL TABLE

Contact Rating Amps	25	50	100	200
A	330	330	330	330
B	298	298	298	298
C	229	229	229	229
D	222	197	197	197
E	267	267	267	267
F ϕ	13	13	13	13

DOUBLE POLE D.C. CONTACTOR



DIMENSIONAL TABLE

Contact Rating Amps	25	50	100	200
A	330	330	330	356
B	298	298	298	324
C	254	229	229	229
D	222	197	197	197
E	267	267	267	267
F 0	13	13	13	13
G	32	32	32	32
H	10	10	10	10