

FLAME ROD RELAY

(Flame Monitor) (MODEL: FRR – 01)

FALME ROD SENSOR AMPLIFIER.

LINEAR SYSTEM `s Flame rod sensor senses the flame using flame rectification technique. The Amplifier provides a voltage for the Flame electrode. The flame electrode is immersed in the flame to be sensed. The current thus generated by the flow of electrons though the flame to the ground is detected by the controller for presence of flame. The Sensor is senses only the burning flame and completely insensitive to visible light and refractory glow. It is best suited for sensing flame in Gas fired burners.

The Amplifier is housed in a compact ABS molded enclosure suitable for both Panel mounting and Rail Mounting. Front Panel has indications for SUUPLY ON. This will turn ON when the supply is given to terminal 1 & 2. The RELAY ON indicator indicates presence of flame and Relay ON condition. 2 sets of potential free change over Contacts are provided for external usage.

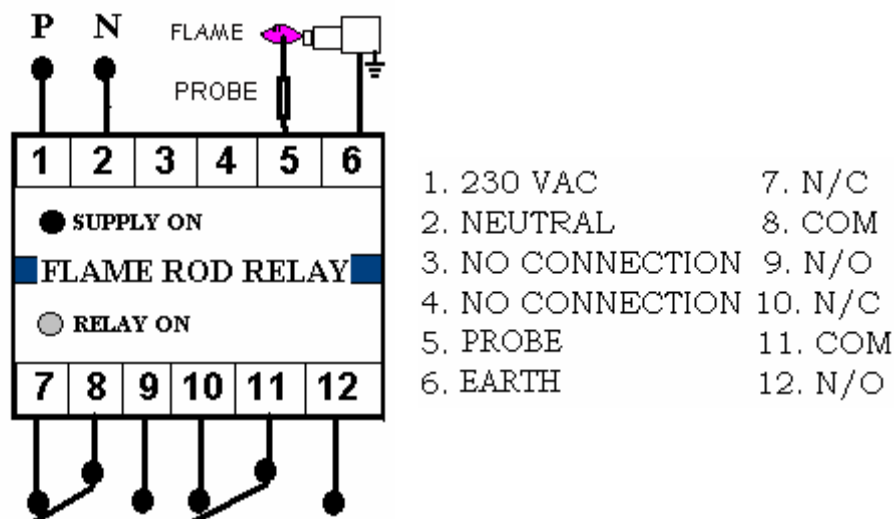
PRECAUTIONS WHILE CONNECTING THE FLAME AMPLIFIER / ROD.

1. Supply voltage 230 V AC +/- 10 %, 50 Hz.
2. Relay contacts are rated for 5 Amps resistive at 230 V AC.
3. Please take precaution while installing the Flame rod to connect it with proper insulation.

FAULTY/ LEAKY CONNECTION WILL CAUSE FAULTY OPERATION.

4. For proper operation mount the Flame rod s that it is immersed in flame properly and away from Ignition Electrodes so that there is no arc over to Flame rod during Ignition period.

ELECTRIC CONNECTIONS:



**** We Serve, with Honours ****

307, Vikrant Industrial Estate,

Govandi Post Office Road,
Deonar, Mumbai – 400 088.

Phone / Fax : + 91 22 2557 6002Email: linearsystems@sify.com

MODEL FRR-01

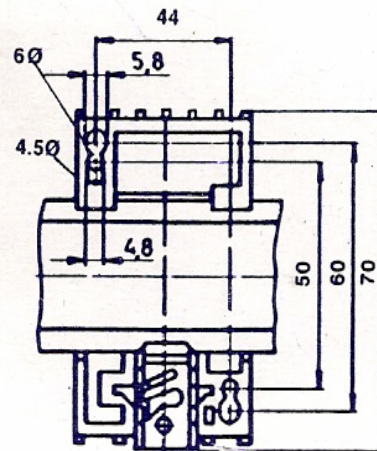
Amplifier Enclosure :-

Size : 70 X 50 X 110 mm (L X B X H)

Dimension Drawing:



MOUNTING DIMENSIONS



75x50x110mm (LxBxH)