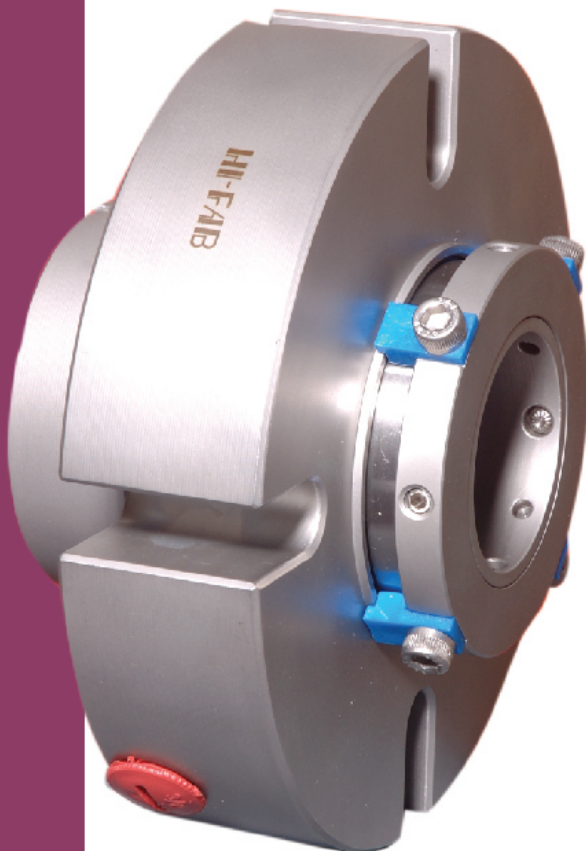
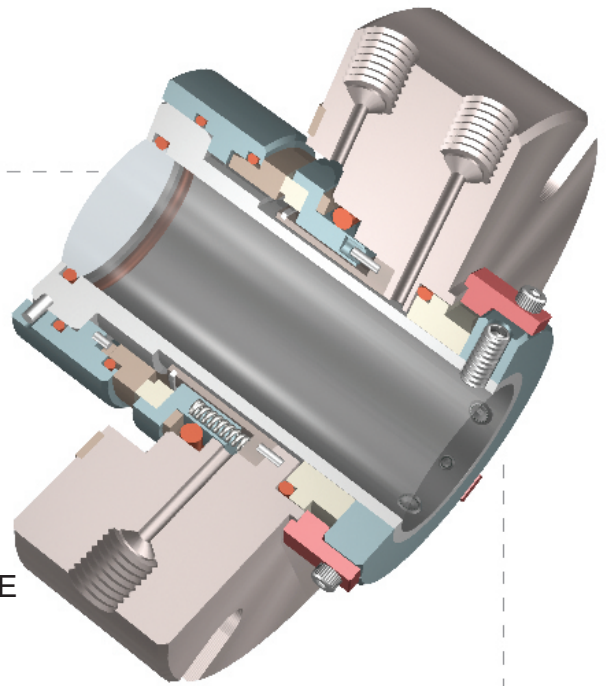


**DISTINCTIVE DESIGNS
OUTSTANDING PERFORMANCE**

UNIVERSAL BIG BORE CARTRIDGE SEAL

- HEAVY DUTY CONSTRUCTION
- REPLACES CONVENTIONAL DOUBLE SEALS
- NON CLOGGING, SPRING PROTECTED
- CAN TOLERATE PRESSURE REVERSAL
- STATIONARY SPRING DESIGN
- GUIDED QUENCH & DRAIN
- FITS ANSI BIG BORE & API PUMPS



APPLICATIONS

- VACUUM DISTILLATION
- SLURRIES
- SALT SOLUTIONS
- BIG BORE PUMPS
- PROCESSING EQUIPMENTS