




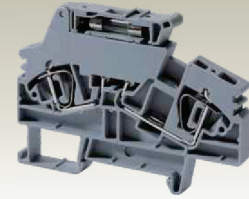
FUSE TERMINAL BLOCKS

These Terminal Blocks are used in electrical and control systems which require fuse protection. These Terminal Blocks accept industry standard Ø5 x 20 and Ø5 x 25 mm glass cartridge fuses. All fuse blocks are supplied with a 6.3 A fast blow fuse (unless specified). Fuse blocks with suffix (L) are used for off-line indication in case of fuse blow out.

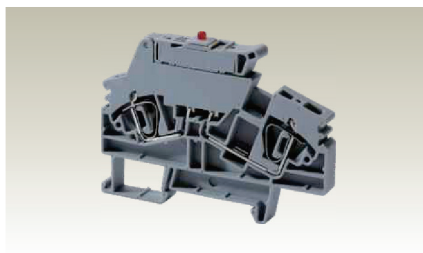
Width (Thickness) x Length	8 x 86 mm			
Height with DIN 35 x 7.5 / 35 x 15 mm Rail	65.3 mm / 73.0 mm			
Connection Possibility as per	IEC		UL - CSA	
With 1 Conductor per clamp	Stranded / Flexible	0.25 - 4.0 mm ²	22 - 10 AWG	
		0.25 - 6.0 mm ²	22 - 10 AWG	
	Solid with Ferrule / Lug	0.25 - 4.0 mm ²	22 - 10 AWG	
With 2 same size Conductors per clamp	with TWIN Ferrule / Lug		0.25 - 2.5 mm ²	22 - 12 AWG
Wire Stripping Length	15 mm			
Ratings As Per	IEC60947-7-3 IEC 60079-7 UL-1059 CSA22.2-158			
Voltage	1000 V		600 V	600 V
Current	6.3 A		6.3 A	6.3 A
Approvals	  			
Insulation Material / Comparative Tracking Index	Polyamide 66 / 1			
Rated Impulse Voltage / Pollution Degree	8 KV / 3			


		Type / Cat. No.	Standard Pack
Terminal Block	With Fuse	ASF4	100
	Without Fuse	ASF4W/F	100
	For 24 V AC/DC		
	For 48 V AC/DC		
	For 110 V AC/DC		
End Plate	For 220 V AC/DC		
		EPASF4	50
		CA701	50 m
		CA701-15	50 m
		CA702	50
End Clamp		CA802	50
		CA103	50
		CA801/7	Imax.: 24 A 100
		CA901/2	Imax.: 17.5 A 100
Insulated Push-In Type Shorting Link (2 pole)		CA509/K8	100
		CA509/K2	100
		SCS0.6/3.5 Blade size: 0.6 x 3.5 mm	10
Insulated Push-In Type (wire) Shorting Link			
Marking Tags			
On Terminal			
On Fuse Carrier			
Screw Driver for actuating the Spring Clamp			

ASF4



ASF4(L)



Width (Thickness) x Length		8 x 86 mm			
Height with DIN 35 x 7.5 / 35 x 15 mm Rail		65.3 mm / 73.0 mm			
Connection Possibility as per		IEC		UL - CSA	
With 1 Conductor per clamp	Stranded / Flexible	0.25 - 4.0 mm ²		22 - 10 AWG	
	Solid	0.25 - 6.0 mm ²			
	with Ferrule / Lug	0.25 - 4.0 mm ²		22 - 10 AWG	
With 2 same size Conductors per clamp	with TWIN Ferrule / Lug	0.25 - 2.5 mm ²		22 - 12 AWG	
Wire Stripping Length		15 mm			
Ratings As Per		IEC60947-7-3	IEC 60079-7	UL-1059	CSA22.2-158
Voltage		1000 V		600 V	600 V
Current		6.3 A		6.3 A	6.3 A
Approvals					
Insulation Material / Comparative Tracking Index		Polyamide 66 / 1			
Rated Impulse Voltage / Pollution Degree		8 KV / 3			

		Type / Cat. No.	Standard Pack
Terminal Block	With Fuse	ASF4(L)	100
	Without Fuse	ASF4(L)W/F	100
	For 24 V AC/DC	ASF4(L)/24V	100
	For 48 V AC/DC	ASF4(L)/48V	100
	For 110 V AC/DC	ASF4(L)/110V	100
	For 220 V AC/DC	ASF4(L)/220V	100
End Plate		EPASF4	50
Mounting Rail (Refer Pg. 136 for details)		CA701	50 m
		CA701-15	50 m
End Clamp (Refer Pg. 137 for details)		CA702	50
		CA802	50
		CA103	50
Insulated Push-In Type Shorting Link (2 pole)		CA801/7	I _{max} : 24 A
Insulated Push-In Type (wire) Shorting Link		CA901/2	I _{max} : 17.5 A
Marking Tags	On Terminal	CA509/K8	100
	On Fuse Carrier	CA509/K2	100
Screw Driver for actuating the Spring Clamp		SCS0.6/3.5 Blade size: 0.6 x 3.5 mm	10

