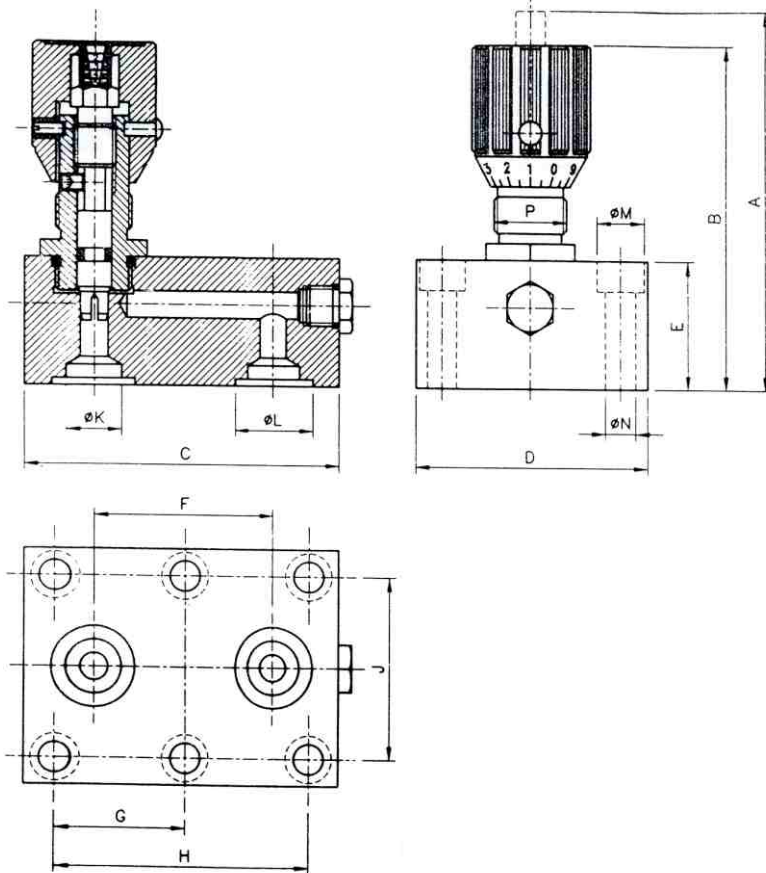
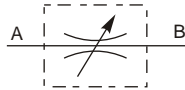


FLUTEC VALVES

"FLUTEC" Manifold Block Mounting-Flow Control Valves - without Check Valve, (Model Code - DVP 8 to 40)



Description :

- Flutec Valves are designed to provide simple and accurate control of hydraulic fluids.
- By increasing number of turning of the control knob, starting from the closed position the flow increases evenly.
- The last turning results in a complete opening of the flow passage.
- The coloured scale and coloured ring in the top of the control knob permits an accurate repetition of settings and visual indication of the flow area.
- Increase in the size of the coloured triangle on the rings corresponds to an increase in flow area.
- A setscrew is provided in the side of the knob to lock the flow control valve in set position to comply with safety standards.

MODEL CODE	A	B	C	D	E	F	G	H	J	ØK	ØL	ØM	ØN	ØP
DVP-8	79	72	47.5	46.0	20	25.5	-	35.0	33.5	7.0	12.7	11	6.6	M18x1.5
DVP-10	84	77	50.0	50.0	25	25.5	-	33.5	38.0	10.0	15.7	11	6.6	M18x1.5
DVP-12	99	89	75.0	57.5	25	30.0	-	38.0	44.5	13.0	18.7	11	6.6	M22x1.5
DVP-16	113	103	93.5	70.0	30	54.5	38.0	76.0	54.0	17.0	24.5	14	9.0	M22x1.5
DVP-20	165	148	111.0	76.5	45	57.0	47.5	95.0	60.0	22.0	30.5	14	9.0	M38x1.5
DVP-25	165	148	143.0	100.0	45	79.5	60.0	120.5	76.0	28.5	37.5	18	11.0	M38x1.5
DVP-30	170	153	171.0	115.0	50	95.0	71.5	143.0	92.0	35.0	43.5	20	14.0	M38x1.5

FLUTEC VALVES

102, Alankar Indl. Estate, Near Virwani Indl. Estate,
Vishweshwar Nagar, Aarey Cross Road.

Goregaon (east) Mumbai - 400 063.

Cell.: 9821043687 tele fax: 29271591

email : flutec1@hotmail.com, sales@flutecvalves.com

Website: www.flutecvalves.com